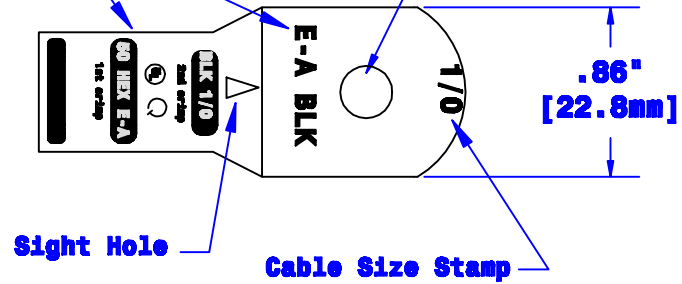
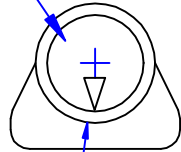


Crimp Information

Hole For 1/4" [M6] Stud

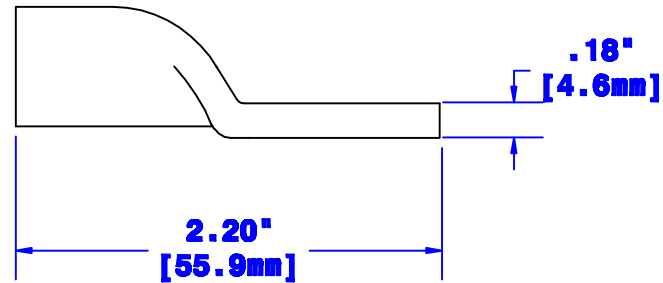


ID Sized For 1/0 [50mm²]
Stranded Cable
5/8" [15.9mm] Min Depth



$.62"$ Ø
[15.7mm]

Dia May Vary Due to
Manufacturing Process.



Property of QUICK CABLE		TITLE 1/0 [50mm ²] W/ Sight Hole	
3700 Quick Dr. Franksville, WI 53126		PART # 8810D	
Confidential and Proprietary Information			
Material & Treatment Copper alloy Tin plated		Drawing # 8810D-Info	REV A
		Sheet 1	of 2

Rev	Date	ECN#	By	Description	Drawn By Jim H	Date 10-26-05	Checked By Mike E	Scale None
A	07-28-09	1908	JMH	Drawing dimensions updated to match UL prints	Tolerances, unless otherwise noted Dimensions are Reference only			