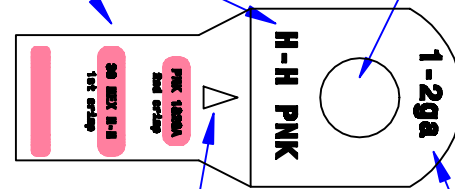


Crimp Information

Hole for 5/16" [M8] stud

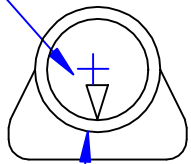


.80"
[20.3mm]

Sight hole

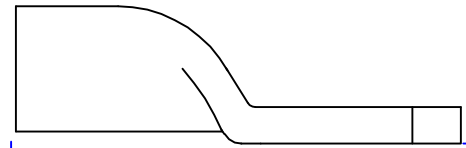
Cable size stamp

ID sized for 1 & 2 Ga.
[40-32mm²] stranded cable
5/8 [15.9mm] Min depth



.55" Ø
[14mm]

Dia may vary due to manufacturing process.



2"
[50.8mm]

.17"
[4.3mm]

Property of QUICK CABLE 3700 Quick Dr. Frankville, WI 53126	TITLE 1 & 2 [40-32mm²] W/ Sight Hole
	PART # 8801E
Confidential and Proprietary Information	
Material & Treatment Copper alloy Tin plated	Drawing # 8801E-Info
	REV Sheet 1 of 2

Rev	Date	ECN#	By	Description

Drawn By Jim H	Date 10-26-05	Checked By ME	Scale None
Tolerances, unless otherwise noted Dimensions are Reference only			