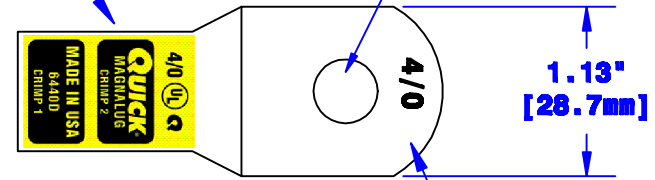


Quick Cable Reserves The Right to Alter Product Types, Their Technical Data, Dimensions, Style And Accessories Without Prior Notification.

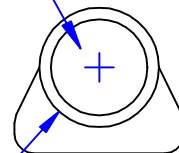
Crimp Information

Hole For 1/4" [M6] Stud



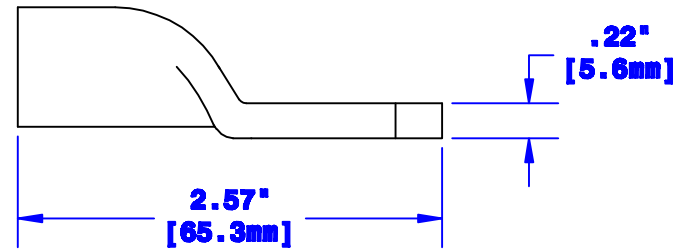
Cable Size Stamp

**ID Sized For 4/0
[103mm²] Stranded Cable
3/4" [19.1mm] Min Depth**



**Ø.8"
[20.3mm]**

**Dia May Vary Due to
Manufacturing Process**



Property of QUICKCABLE® 3700 Quick Drive Franksville, WI 53126 U.S.A. www.quickcable.com		TITLE 4/0 [103mm²] Magna Lug
Confidential and Proprietary Information		PART # 6440D
Material & Treatment Copper Tube Tin Plated	Drawing # 6440D-INFO	REV B
		Sheet 1 of 1

Rev	Date	ECH#	By	Description	Drawn By	Date	Checked By	Scale
B	01-30-12	2450	JMM	Redrawn; printing info updated	Paul	03-12-03	Mike E None	
					Tolerances, unless otherwise noted Dimensions are reference only			