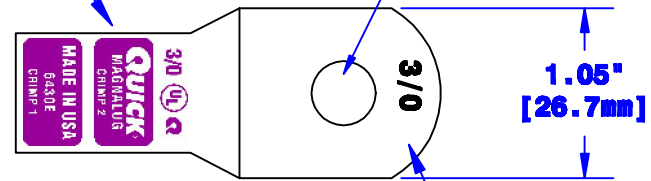


Quick Cable Reserves The Right to Alter Product Types, Their Technical Data, Dimensions, Style And Accessories Without Prior Notification.

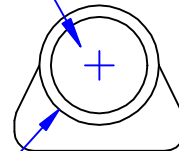
Crimp Information

Hole For 5/16" [M8] Stud



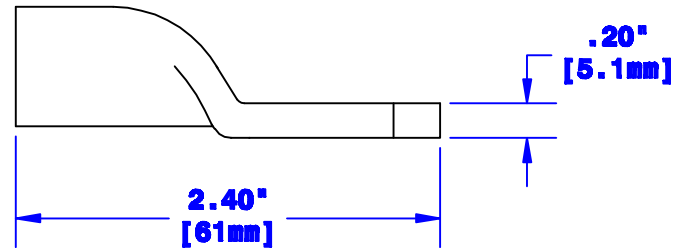
Cable Size Stamp

ID Sized For 3/0 [81mm²] Stranded Cable
3/4" [19.1mm] Min Depth



Ø.740" [18.8mm]

Dia May Vary Due to Manufacturing Process



Property of QUICKCABLE 3700 Quick Drive Franksville, WI 53126 U.S.A. www.quickcable.com		TITLE 3/0 [81mm²] Magna Lug
		PART # 6430E
Confidential and Proprietary Information		
Material & Treatment Copper Tube Tin Plated	Drawing # 6430E-INFO	REV B
		Sheet 1 of 1

Drawn By Paul	Date 03-12-03	Checked By Mike E	Scale None
Tolerances, unless otherwise noted Dimensions are reference only			
Rev B	Date 01-30-12	ECH# 2450	By JMM
Description Redrawn; printing info updated			