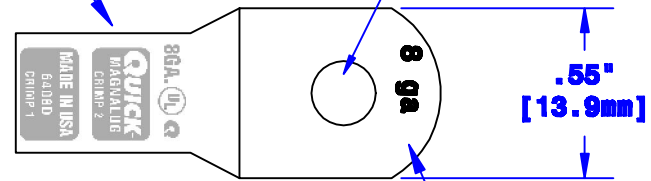


Quick Cable Reserves The Right to Alter Product Types, Their Technical Data, Dimensions, Style And Accessories Without Prior Notification.

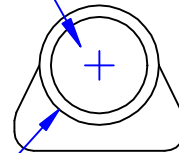
**Crimp Information**

**Hole For 1/4" [M6] Stud**



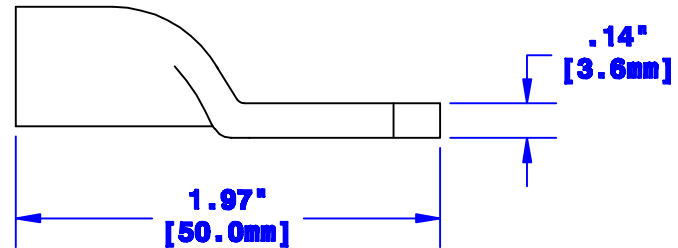
**Cable Size Stamp**

**ID Sized For 8 Ga  
[8mm<sup>2</sup>] Stranded Cable  
3/4" [19.1mm] Min Depth**



**Ø.35"  
[8.9mm]**

**Dia May Vary Due to  
Manufacturing Process**



Property of <b>QUICKCABLE</b> 3700 Quick Drive Frankville, WI 53126 U.S.A. www.quickcable.com		TITLE <b>8 Ga [8mm<sup>2</sup>] Magna Lug</b>
PART # <b>6408D</b>		
<b>Confidential and Proprietary Information</b>		
Material & Treatment <b>Copper Tube Tin Plated</b>	Drawing # <b>6408D-INFO</b>	REV <b>B</b>
Sheet 1 of 1		

Drawn By <b>Paul</b>	Date <b>03-12-03</b>	Checked By <b>Mike E</b>	Scale <b>None</b>
Tolerances, unless otherwise noted <b>Dimensions are reference only</b>			
<b>B</b>	<b>01-30-12</b>	<b>2450</b>	<b>JMM</b>
Rev	Date	ECH#	By
			Description
			<b>Redrawn; printing info updated</b>