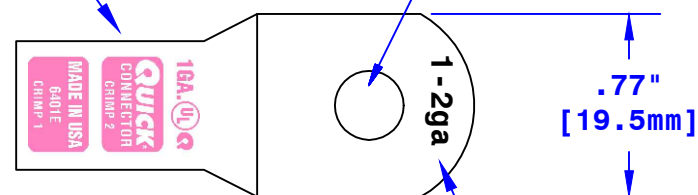


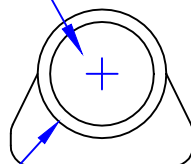
Crimp Information

Hole For $\frac{5}{16}$ " [M8] Stud



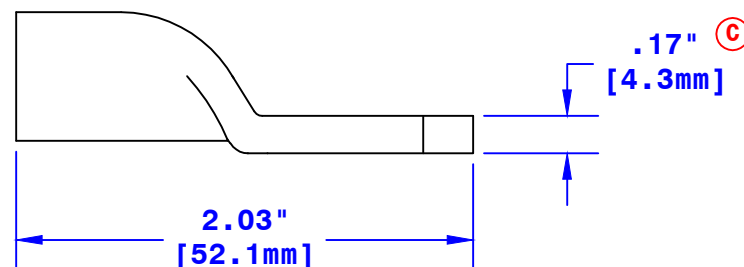
Cable Size Stamp

ID Sized For 1 or 2 Ga
[40-32mm²] Stranded Cable
 $\frac{3}{4}$ " [19.1mm] Min Depth



Ø.55"
[14mm]

Dia May Vary Due to
Manufacturing Process



<div>Property of</div> <div>QUICKCABLE®</div> <div>3700 Quick Drive Franksville, WI 53126 U.S.A. www.quickcable.com</div>	<div>TITLE</div> <div>1&2 Ga [40-32mm²] Magna Lug</div> <div>PART #</div> <div>6401E</div>	
Confidential and Proprietary Information		
<div>Material and Treatment</div> <div>Copper Tube Tin Plated</div>	<div>Drawing #</div> <div>6401E-INFO</div> <div>Sheet 1 Of 1</div>	<div>REV</div> <div>C</div>

Rev	Date	ECN#	By	Description	Drawn By	Date	Checked By	Scale
C	05-08-14	3037	MRE	Updated dimension	Paul	03-12-03	Mike E	None
B	01-30-12	2459	JMH	Redrawn; printing info updated	Tolerances, unless otherwise noted			
Dimensions are reference only								