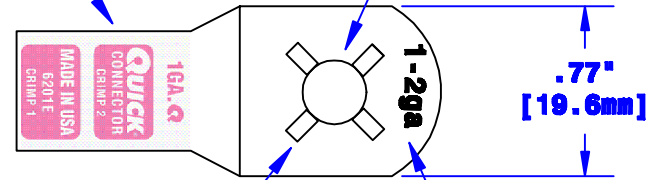


Quick Cable Reserves The Right to Alter Product Types, Their Technical Data, Dimensions, Style And Accessories Without Prior Notification.

Crimp Information

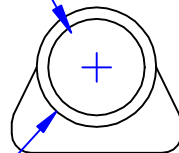
Hole For  $\frac{5}{16}$ " [M8] Stud



Anti-rotation Feature Stamped Here

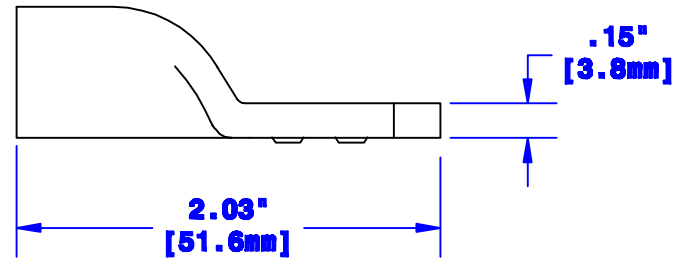
Cable Size Stamp

ID Sized For 1-2ga. [40-32mm<sup>2</sup>] Stranded Cable  
 $\frac{3}{4}$ " [19.1mm] Min Depth



$\varnothing.55$ " [14mm]

Dia May Vary Due to Manufacturing Process



<b>Property of</b> <b>QUICKCABLE</b> 3700 Quick Drive Franksville, WI 53126 U.S.A. www.quickcable.com	<b>TITLE</b> 1-2 Ga. [40-32mm <sup>2</sup> ] Magna Lug, Anti-Rotation
	<b>PART #</b> 6201E

**Confidential and Proprietary Information**

					<b>Drawn By</b> Jim H	<b>Date</b> 11-24-03	<b>Checked By</b> Mike E	<b>Scale</b> None	<b>Material &amp; Treatment</b> Copper Tube Tin Plated	<b>Drawing #</b> 6201E-INFO	<b>REV</b> A
<b>Rev</b> A	<b>Date</b> 02-07-12	<b>ECN#</b> 2489	<b>By</b> JMM	<b>Description</b> Redrawn; printing info updated	Tolerances, unless otherwise noted Dimensions are reference only				Sheet 1 of 1		