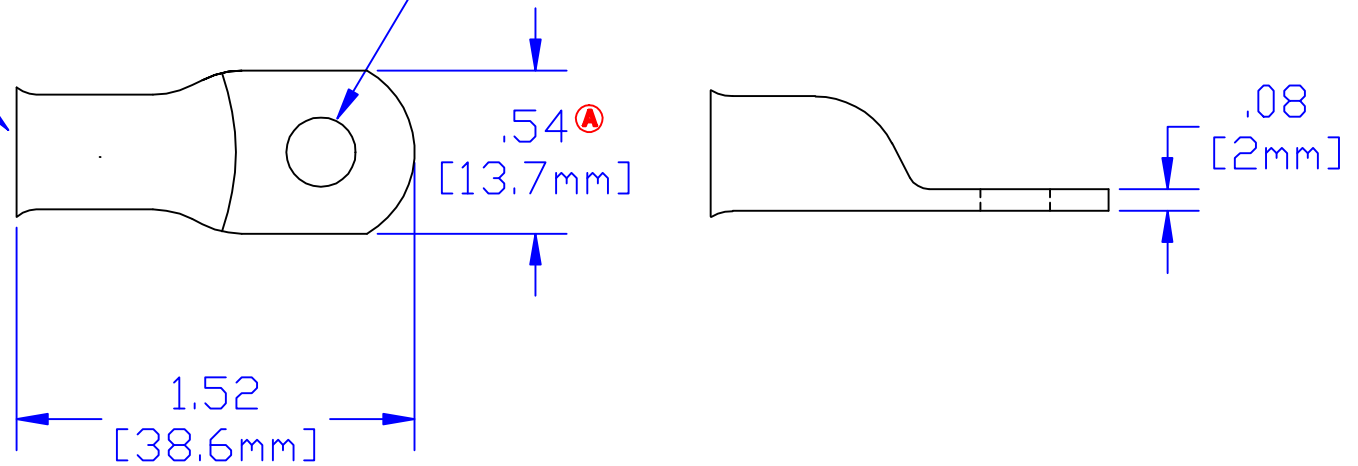


**ID sized for  
4 ga [19mm<sup>2</sup>]  
cable**

**Hole for 5/16" [M8] stud**



<b>Property of QUICK CABLE</b>	<b>TITLE</b> 4 ga [19mm <sup>2</sup> ] MAX LUG 5/16 [M8] Stud	
	<b>PART #</b> 5952E	
<small>3700 Quick Dr. Franksville WI</small>		
<b>Material &amp; Treatment</b> 100% Copper Tin plated	<b>Drawing #</b> 5952E-INFO	<b>REV</b>
	<b>Sheet 1 of 1</b>	

					<b>Drawn By</b> Jim H	<b>Date</b> 7/11/03	<b>Checked By</b> Paul	<b>Scale</b> None
				<small>Tolerances, unless otherwise noted</small>				
<b>Rev</b>	<b>Date</b>	<b>ECN#</b>	<b>By</b>	<b>Description</b>	<b>Dimensions are ref only</b>			
A	3-18-04	718	JMH	Change width and length dim.				