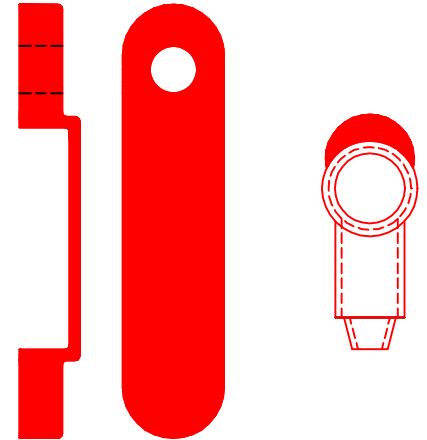
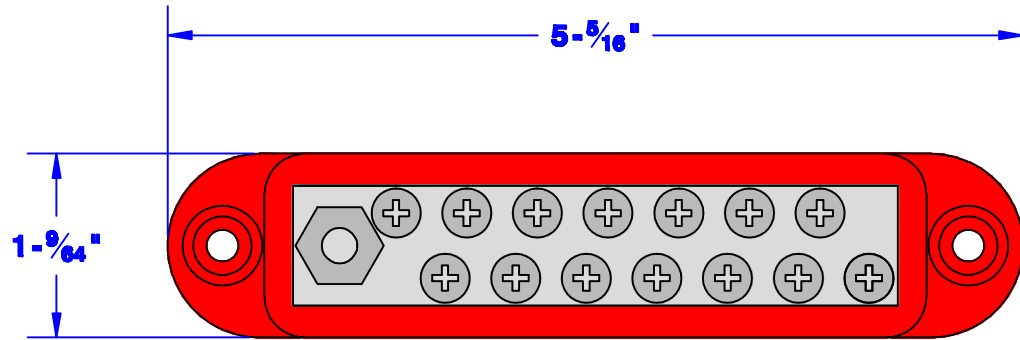
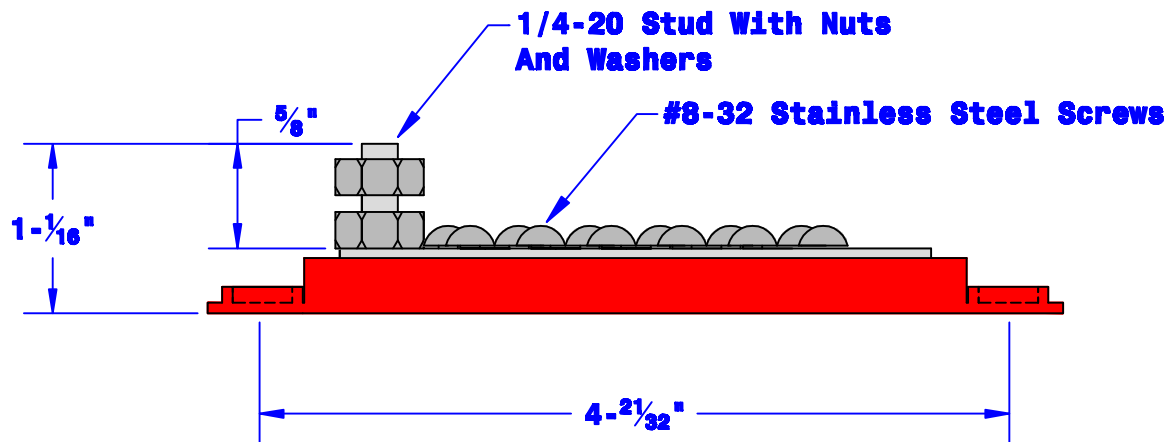


Quick Cable Reserves The Right to Alter Product Types, Their Technical Data, Dimensions, Style And Accessories without Prior Notification.



Cover & Terminal Protector Included  
Sized For 8-2 Ga. Cable  
[Not Shown to Scale]



**NOTE: Max Amperage:  
180 Amps @ 12 Volts  
Max Voltage: 48 VDC**

<b>Property of</b> <b>QUICKCABLE®</b> 3700 Quick Drive Franksville, WI 53126 U.S.A. www.quickcable.com	TITLE
	<b>12 Point Terminal Bus Bar, Pos.</b>
	PART #
	<b>509717</b>

**Confidential and Proprietary Information**

Rev	Date	ECN#	By	Description	Drawn By	Date	Checked By	Scale
A	12-07-10	2219	JMH	Voltage & amp rating added	Bill S	7-06-07	Mike E	None
					Tolerances, unless otherwise noted			
					Dimensions are reference only			

Material & Treatment	Drawing #	REV
<b>Glass Filled Red Nylon</b>	<b>509717-Info</b>	<b>A</b>
Sheet 1 of 1		