

**Crimp Info**

**.47**  
**[12mm]**



**.79 Dia..**  
**[20.1mm]**

**Anti-Rotation Feature**

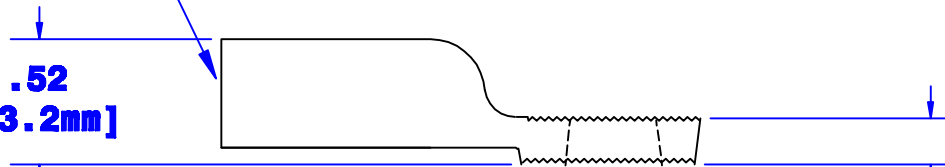
**Sized for 3/8" [M10] Stud**

**1.60 Ref**  
**[40.6mm]**

**2"**

**Sized for 6 Ga. [13mm<sup>2</sup>] Cable**

**.52**  
**[13.2mm]**



**.17**  
**[4.3mm]**

Property of <b>QUICK CABLE</b> 3700 Quick Drive Franksville, WI 53126 U.S.A. www.quickcable.com	TITLE <b>Die Cast Connector                  6 Ga. [13mm<sup>2</sup>] Lug</b>
	PART # <b>4906F</b>

**Confidential and Proprietary Information**

Material & Treatment High Conductivity Copper Alloy Tin Plated	Drawing # <b>4906F-Info</b>	REV <b>D</b>
	Sheet 1 of 1	

				Drawn By <b>Jim H</b>	Date <b>12-28-06</b>	Checked By <b>Mike E</b>	Scale <b>None</b>
				Tolerances, unless otherwise noted Dimensions are reference only			
<b>D</b>	<b>11-12-13</b>	<b>2020</b>	<b>JMH</b>	Matches manufacturing capabilities			
Rev	Date	ECN#	By	Description			