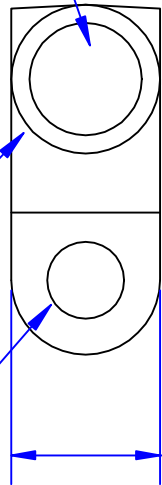


Quick Cable Reserves The Right to Alter Product Types, Their Technical Data, Dimensions, Style And Accessories Without Prior Notification.

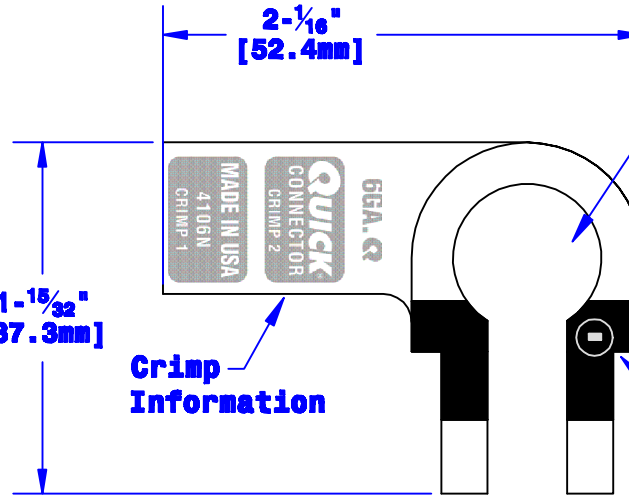
**I.D. Sized For 6 Ga. [13mm<sup>2</sup>] Stranded Cable  
7/8" [22.2mm] Min Depth**

**35/64" O.D. [14mm] (May Vary Due To Shrinkage)**

**Bolt Hole Sized For 5/16" [M8] Bolt**



**21/32" [16.7mm]**



**2-1/16" [52.4mm]**

**1-15/32" [37.3mm]**

**Crimp Information**

**Sized For Neg. Post Per SAE J537**

**Polarity Stamp**

<b>Property of</b> <b>QUICKCABLE®</b> 3700 Quick Drive Franksville, WI 53126 U.S.A. www.quickcable.com	<b>TITLE</b> <b>Right Elbow, Neg. 6 Ga. [13mm<sup>2</sup>]</b>
	<b>PART #</b> <b>4106N</b>

**Confidential and Proprietary Information**

<b>Material &amp; Treatment</b> High Conductivity Copper Alloy Tin Plated	<b>Drawing #</b> <b>4106N-INFO</b>	<b>REV</b> Sheet 1 of 1
--	---------------------------------------	----------------------------

					<b>Drawn By</b> <b>Jim H</b>	<b>Date</b> <b>07-13-12</b>	<b>Checked By</b> <b>Mike E</b>	<b>Scale</b> <b>None</b>
					Tolerances, unless otherwise noted <b>Dimensions are reference only</b>			
<b>Rev</b>	<b>Date</b>	<b>ECH#</b>	<b>By</b>	<b>Description</b>				