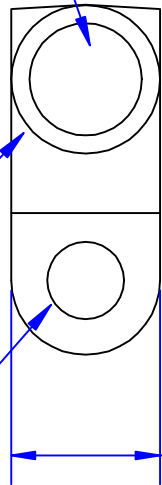


Quick Cable Reserves The Right to Alter Product Types, Their Technical Data, Dimensions, Style And Accessories Without Prior Notification.

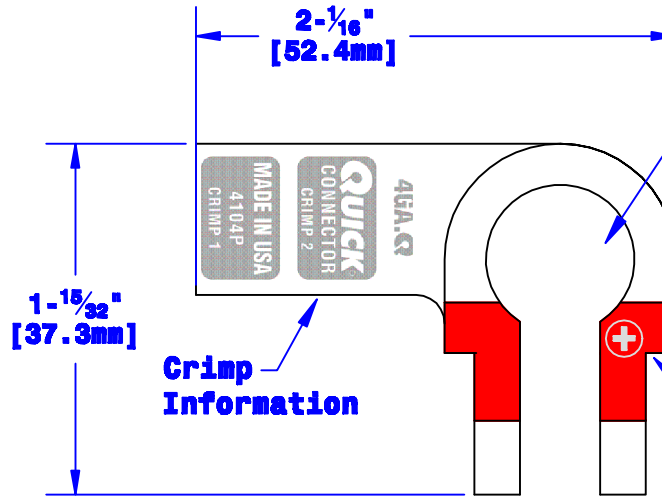
I.D. Sized For 4 Ga. [19mm²] Stranded Cable
 $\frac{7}{8}$ " [22.2mm] Min Depth

$\frac{35}{64}$ " O.D. [14mm]
 (May Vary Due To Shrinkage)

Bolt Hole Sized For $\frac{5}{16}$ " [M8] Bolt



$\frac{21}{32}$ " [16.7mm]



$2\frac{1}{16}$ " [52.4mm]

$1\frac{15}{32}$ " [37.3mm]

Crimp Information

Sized For Pos. Post Per SAE J537

Polarity Stamp

Property of QUICKCABLE 3700 Quick Drive Frankville, WI 53126 U.S.A. www.quickcable.com	TITLE Right Elbow, Pos. 4 Ga. [19mm²]
	PART # 4104P

Confidential and Proprietary Information

Material & Treatment High Conductivity Copper Alloy Tin Plated	Drawing # 4104P-INFO	REV Sheet 1 of 1
--	---------------------------------------	----------------------------

Drawn By Jim H	Date 07-13-12	Checked By Mike E	Scale None	
Tolerances, unless otherwise noted Dimensions are reference only				
Rev	Date	ECH#	By	Description