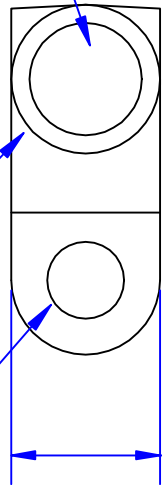


Quick Cable Reserves The Right to Alter Product Types, Their Technical Data, Dimensions, Style And Accessories Without Prior Notification.

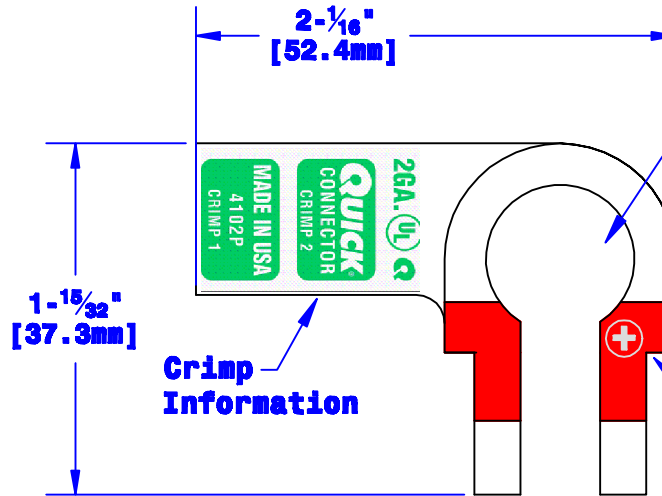
**I.D. Sized For 2 Ga. [32mm²] Stranded Cable
7/8" [22.2mm] Min Depth**

**35/64" O.D. [14mm]
(May Vary Due To Shrinkage)**

Bolt Hole Sized For 5/16" [M8] Bolt



21/32" [16.7mm]



Crimp Information

Sized For Pos. Post Per SAE J537

Polarity Stamp

Property of QUICKCABLE 3700 Quick Drive Franksville, WI 53126 U.S.A. www.quickcable.com	TITLE Right Elbow, Pos. 2 Ga. [32mm²]
	PART # 4102P

Confidential and Proprietary Information

Material & Treatment High Conductivity Copper Alloy Tin Plated	Drawing # 4102P-INFO	REV D
Sheet 1 of 1		

					Drawn By Paul	Date 04-15-03	Checked By Roger	Scale None
					Tolerances, unless otherwise noted Dimensions are reference only			
Rev D	Date 07-09-12	ECH# 2459	By JMM	Description Redrawn; printing info updated				