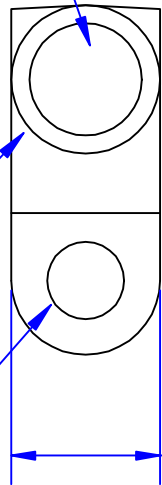


Quick Cable Reserves The Right to Alter Product Types, Their Technical Data, Dimensions, Style And Accessories Without Prior Notification.

I.D. Sized For 1 Ga. [40mm²] Stranded Cable
 $\frac{7}{8}$ " [22.2mm] Min Depth

$\frac{35}{64}$ " O.D. [14mm]
 (May Vary Due To Shrinkage)

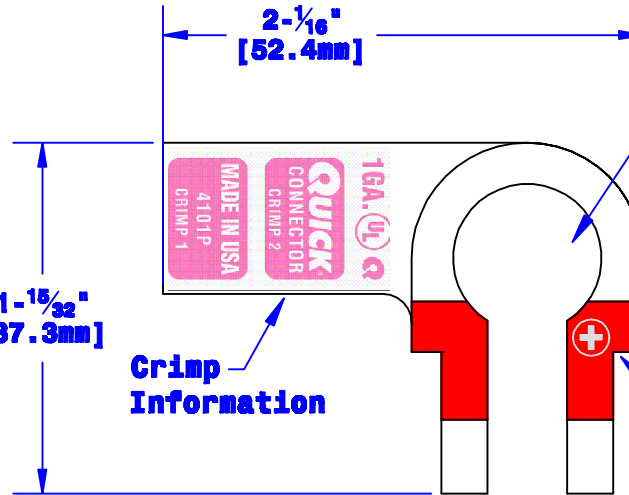
Bolt Hole Sized For $\frac{5}{16}$ " [M8] Bolt



$\frac{21}{32}$ " [16.7mm]

$1\frac{15}{32}$ " [37.3mm]

Crimp Information



$2\frac{1}{16}$ " [52.4mm]

Sized For Pos. Post Per SAE J537

Polarity Stamp

Property of QUICKCABLE® 3700 Quick Drive Franksville, WI 53126 U.S.A. www.quickcable.com	TITLE Right Elbow, Pos. 1 Ga. [40mm²]
	PART # 4101P

Confidential and Proprietary Information

Material & Treatment High Conductivity Copper Alloy Tin Plated	Drawing # 4101P-INFO Sheet 1 of 1	REV D
--	---	------------------------

					Drawn By Paul	Date 04-15-03	Checked By Roger	Scale None
					Tolerances, unless otherwise noted Dimensions are reference only			
D	07-09-12	2459	JMM	Redrawn; printing info updated				
Rev	Date	ECH#	By	Description				