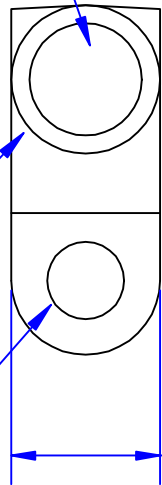


Quick Cable Reserves The Right to Alter Product Types, Their Technical Data, Dimensions, Style And Accessories Without Prior Notification.

**I.D. Sized For 1 Ga. [40mm²] Stranded Cable
7/8" [22.2mm] Min Depth**

**35/64" O.D. [14mm]
(May Vary Due To Shrinkage)**

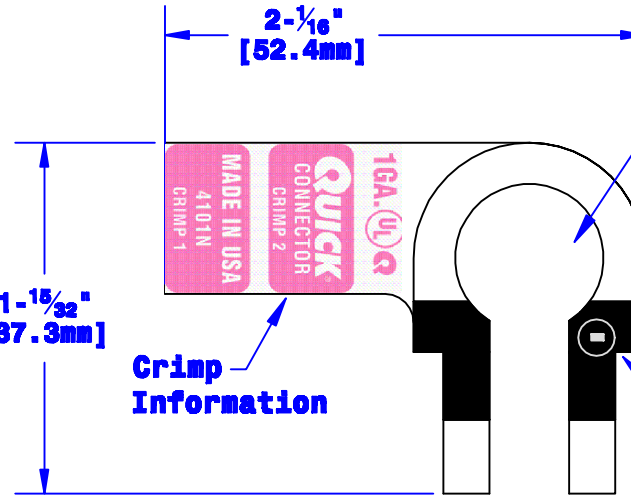
Bolt Hole Sized For 5/16" [M8] Bolt



21/32" [16.7mm]

1-15/32" [37.3mm]

Crimp Information



2-1/16" [52.4mm]

Sized For Neg. Post Per SAE J537

Polarity Stamp

Property of QUICKCABLE® 3700 Quick Drive Franksville, WI 53126 U.S.A. www.quickcable.com	TITLE Right Elbow, Neg. 1 Ga. [40mm²]
	PART # 4101N

Confidential and Proprietary Information

Material & Treatment High Conductivity Copper Alloy Tin Plated	Drawing # 4101N-INFO Sheet 1 of 1	REV D
--	---	------------------------

					Drawn By Paul	Date 04-15-03	Checked By Roger	Scale None
					Tolerances, unless otherwise noted Dimensions are reference only			
D	07-09-12	2459	JMM	Redrawn; printing info updated				
Rev	Date	ECH#	By	Description				