

2 Ga. Red Welding Cable
P/N 202204

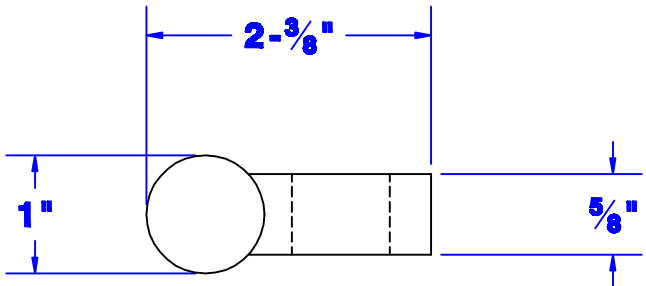
3/4" Post Hole

1-1/2" Dia.
Typ.

60"

1-1/8"

1-31/32"



End View

Property of QUICK CABLE 3700 Quick Drive Frankeville, WI 53126 U.S.A. www.quickcable.com	TITLE Leadhead, Offset 2 Ga.	
	PART # 214157	
Confidential and Proprietary Information		
Material & Treatment Welding Cable 600 Volt EPDM 5% Antimonial Lead	Drawing # 214157-Info	REV 1 of 1

Rev	Date	ECN#	By	Description	Drawn By Jim H	Date 4-12-06	Checked By Mike E	Scale None
					Tolerances, unless otherwise noted Length to be +/- 2"			