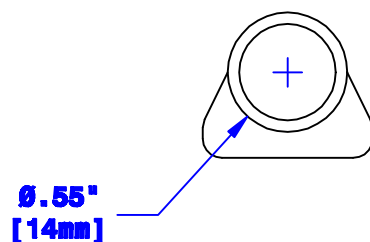
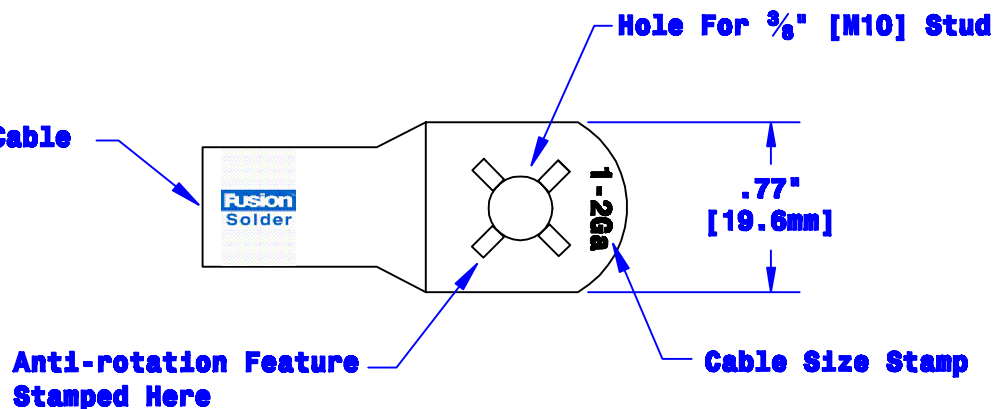
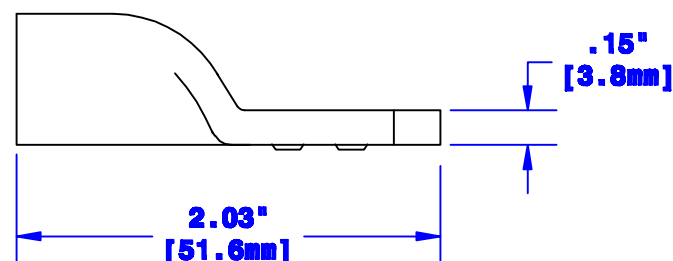


Quick Cable Reserves The Right to Alter Product Types, Their Technical Data, Dimensions, Style And Accessories Without Prior Notification.

Prefilled With Rosin & Solder  
Sized for 1-2 Ga. [40-32mm<sup>2</sup>] Cable  
3/4" [19.1mm] Min. Depth  
Chamfered Lead-In, Both Ends



Dia May Vary Due to Manufacturing Process



Property of <b>QUICKCABLE®</b> 3700 Quick Drive Franksville, WI 53128 U.S.A. www.quickcable.com		TITLE 1-2 Ga. [40-32mm <sup>2</sup> ] Magna Lug, Fusion Anti-Rotation
PART # 141316		CONFIDENTIAL AND PROPRIETARY INFORMATION
Material & Treatment Copper Tube Tin Plated	Drawing # 141316-INFO	REV A
Sheet 1 of 1		

Rev	Date	ECN#	By	Description	Drawn By	Date	Checked By	Scale
A	04-10-12	2489	JMM	Redrawn; printing info updated	Jim H	10-19-07	Mike E	None
					Tolerances, unless otherwise noted Dimensions are reference only			