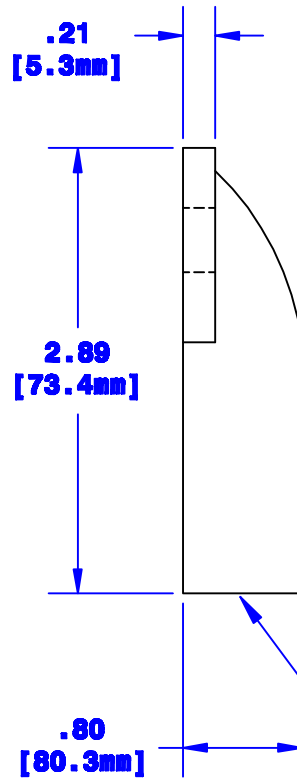
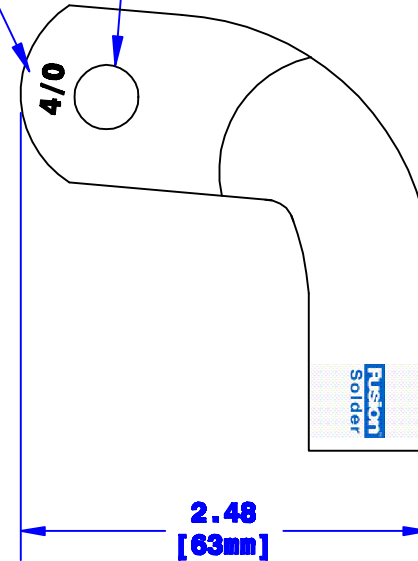


Quick Cable Reserves The Right to Alter Product Types, Their Technical Data, Dimensions, Style And Accessories Without Prior Notification.



Cable Size Stamp

Sized for 3/8" [M10] Stud



Prefilled With Rosin & Solder  
Sized for 4/0 [103mm<sup>2</sup>] Cable  
3/4" [19.1mm] Min. Depth

Dia May Vary Due to Manufacturing Process

Property of <b>QUICKCABLE</b> 3700 Quick Drive Franksville, WI 53126 U.S.A. www.quickcable.com	TITLE MagnaLug, Elbow 4/0 [103mm <sup>2</sup> ] Fusion
	PART # 141220

Confidential and Proprietary Information

				Drawn By <b>Jim H</b>	Date <b>10-13-08</b>	Checked By <b>Mike E</b>	Scale <b>None</b>	Material & Treatment <b>Copper Tube Tin Plated</b>	Drawing # <b>141220-Info</b>	REV <b>A</b>	
<b>A</b>	<b>04-13-12</b>	<b>2450</b>	<b>JMH</b>	<b>Redrawn; printing info updated</b>				Tolerances, unless otherwise noted			
Rev	Date	ECN#	By	Description				Dimensions are reference only			
								Sheet 1 of 1			