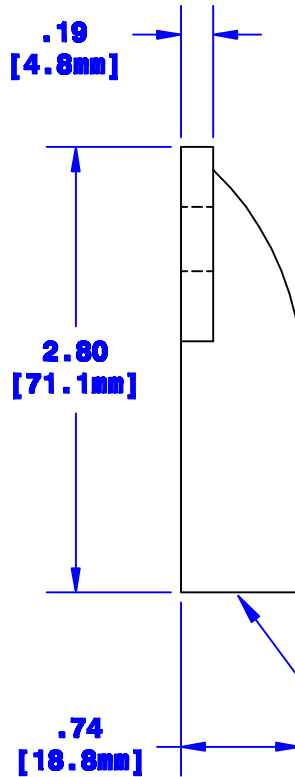
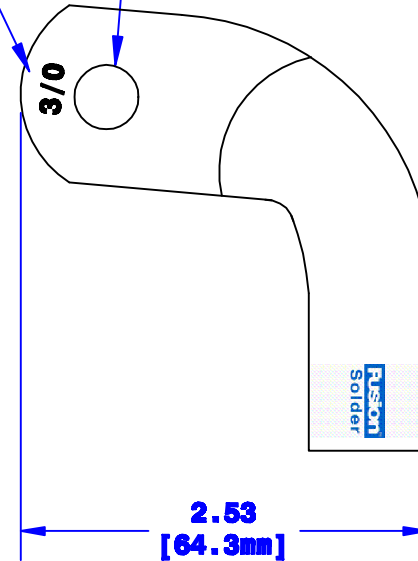


Quick Cable Reserves The Right to Alter Product Types, Their Technical Data, Dimensions, Style And Accessories Without Prior Notification.



Cable Size Stamp

Sized for 3/8" [M10] Stud



Prefilled With Rosin & Solder
Sized for 3/0 [81mm²] Cable
3/4" [19.1mm] Min. Depth

Dia May Vary Due to Manufacturing Process

Property of QUICKCABLE 3700 Quick Drive Franksville, WI 53126 U.S.A. www.quickcable.com	TITLE MagnaLug, Elbow 3/0[81mm ²] Fusion
	PART # 141219

Confidential and Proprietary Information

				Drawn By Jim H	Date 10-13-08	Checked By Mike E	Scale None	Material & Treatment Copper Tube Tin Plated	Drawing # 141219-Info	REV A	
A	04-13-12	2450	JMH	Redrawn; printing info updated							
Rev	Date	ECN#	By	Description						Sheet 1 of 1	

Tolerances, unless otherwise noted
Dimensions are reference only