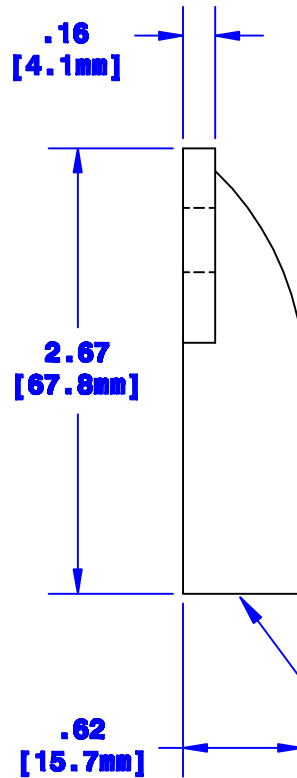
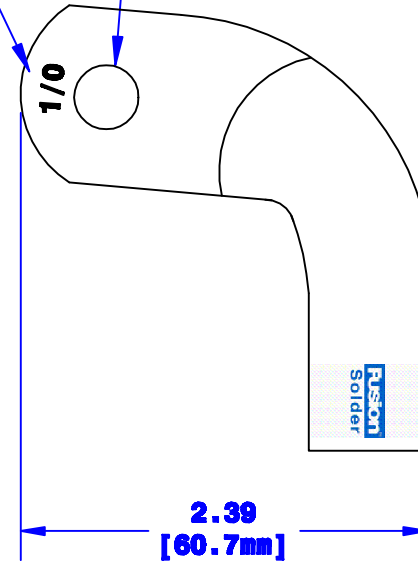


Quick Cable Reserves The Right to Alter Product Types, Their Technical Data, Dimensions, Style And Accessories Without Prior Notification.



Cable Size Stamp

Sized for 3/8" [M10] Stud



Prefilled With Rosin & Solder
Sized for 1/0 [50mm²] Cable
3/4" [19.1mm] Min. Depth

Dia May Vary Due to Manufacturing Process

Property of QUICKCABLE® 3700 Quick Drive Franksville, WI 53126 U.S.A. www.quickcable.com	TITLE
	MagnaLug, Elbow 1/0 [50mm ²] Fusion
	PART #
	141217

Confidential and Proprietary Information

				Drawn By	Date	Checked By	Scale	Material & Treatment	Drawing #	REV	
				Jim H	10-13-08	Mike E	None	Copper Tube Tin Plated	141217-Info	A	
				Tolerances, unless otherwise noted					Sheet 1 of 1		
Rev	Date	ECN#	By	Description				Dimensions are reference only			

A 04-13-12 2450 JMH Redrawn; printing info updated