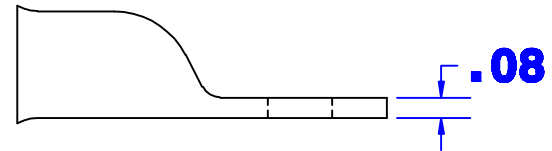
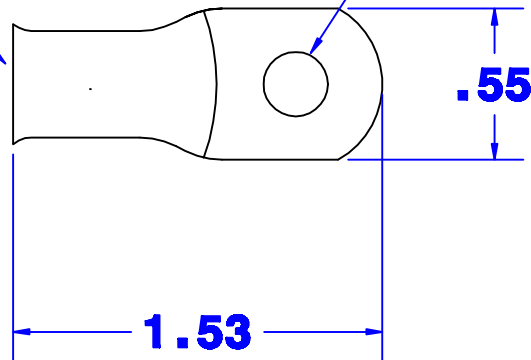


**ID sized for  
4 ga cable**

**Hole for 1/4" stud**



				Drawn By	Date	Checked By	Scale
				Jim H	7/11/03	Paul	None
				Tolerances, unless otherwise noted			
				All dimensions are ref only			
Rev	Date	By	Description				

<b>Property of</b> <b>QUICK CABLE</b> 3700 Quick Dr. Franksville WI		<b>TITLE</b> 4 ga MAX LUG straight 1/4 stud	
		<b>PART #</b> 105056	
<b>Material &amp; Treatment</b> 100% Copper		<b>Drawing #</b> 105056-INFO	<b>REV</b>
		<b>Sheet</b> 1 <b>of</b> 1	