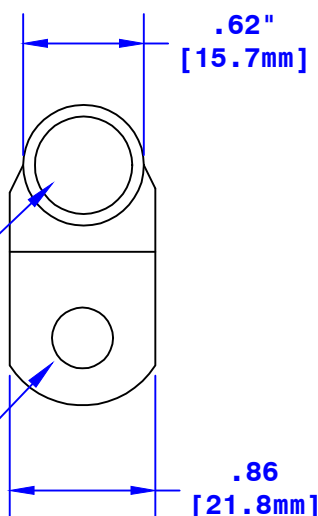


Printed Crimp Information

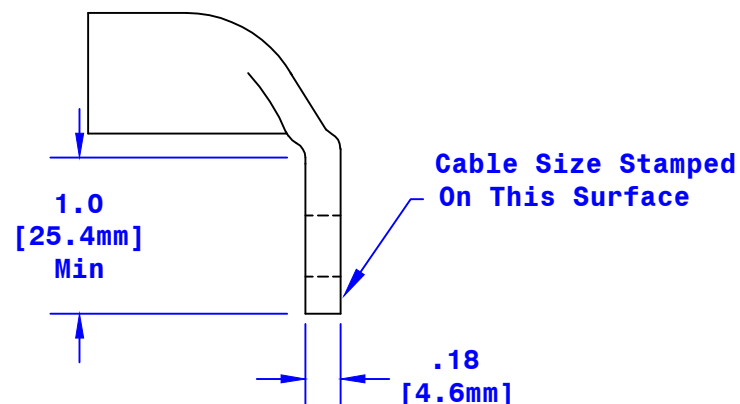


ID Sized For 1/0  
[50mm<sup>2</sup>] Stranded Cable  
3/4" [19mm] Min Depth

Hole Sized For 1/2" [M12] Stud



Dia May Vary Due to  
Manufacturing Process



Property of <b>QUICKCABLE®</b> 3700 Quick Drive Franksville, WI 53126 U.S.A. www.quickcable.com		TITLE 1/0 Ga [50mm <sup>2</sup> ] 90° 1/2" [M12] Hole	
		PART # <b>6410HL</b>	
Confidential and Proprietary Information			
Material & Treatment  Copper Tube Tin Plated		Drawing # <b>6410HL-Info</b>	
		REV <b>B</b>	
		Sheet 1 of 1	

Rev	Date	ECN#	By	Description	Drawn By	Date	Checked By	Scale
B	04-10-12	2459	JMH	Redrawn; printing info updated	Kirk A	10-24-07	Mike E	None
					Tolerances, unless otherwise noted Dimensions are reference only			