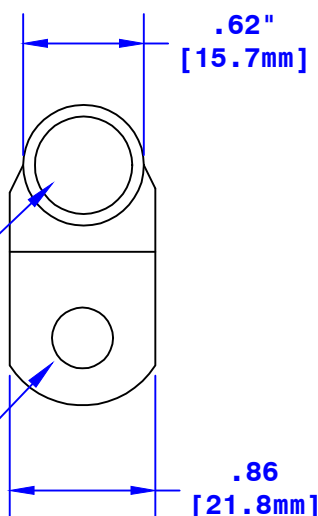


Printed Crimp Information

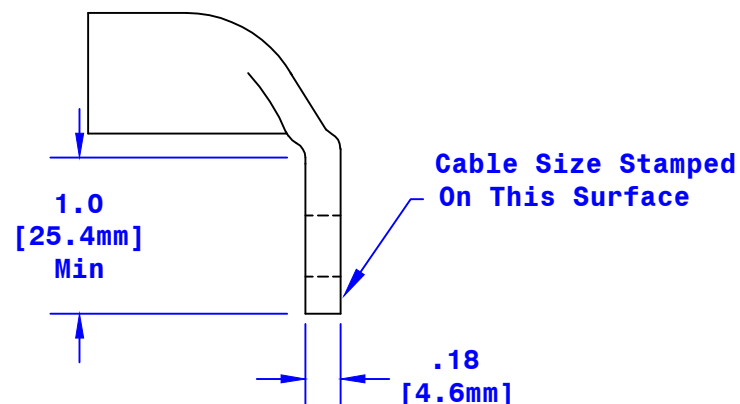


ID Sized For 1/0
[50mm²] Stranded Cable
3/4" [19mm] Min Depth

Hole Sized For 3/8" [M10] Stud



Dia May Vary Due to
Manufacturing Process



Property of QUICKCABLE® 3700 Quick Drive Franksville, WI 53126 U.S.A. www.quickcable.com		TITLE 1/0 Ga [50mm ²] 90° 3/8" [M10] Hole	
		PART # 6410FL	
Confidential and Proprietary Information			
Material & Treatment Copper Tube Tin Plated		Drawing # 6410FL-Info	REV B
		Sheet 1	Of 1

Rev	Date	ECN#	By	Description	Drawn By	Date	Checked By	Scale
B	04-10-12	2459	JMH	Redrawn; printing info updated	Kirk A	10-24-07	Mike E	None
					Tolerances, unless otherwise noted Dimensions are reference only			