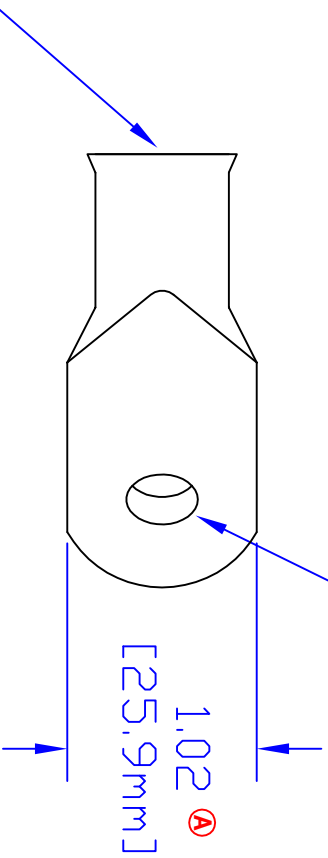
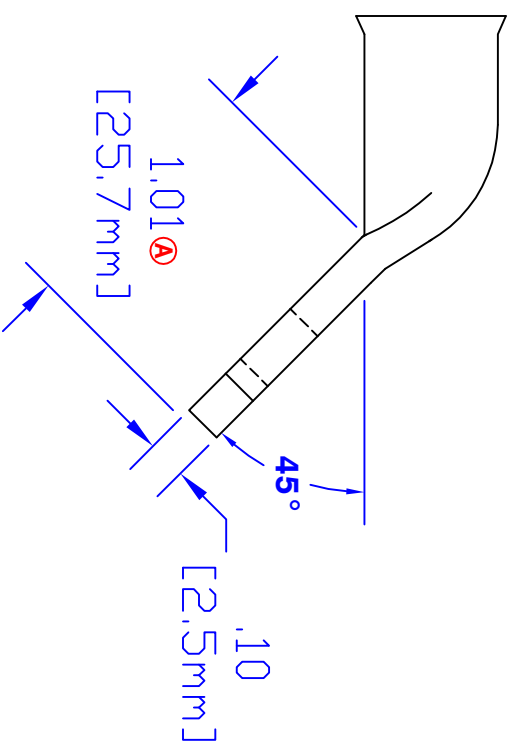


Hole for 5/16 [M10] stud



**ID sized for
4/0 ga [103mm²] cable**



Rev	Date	ECN#	By	Description
B	8-13-09	1991	BS	Update dimensions
A	3-18-04	718	JMH	Change width and length dim.

Drawn By	Date	Checked By	Scale
Jim H	7-24-03	Paul	None
Tolerances, unless otherwise noted			
All dimensions are ref only			

Property of		3700 Quick Dr., Franksville WI	
QUICK CABLE			
Material & Treatment		Drawing #	
100% Copper		5958EV-INFO	
Tin plated		REV	
		B	
Sheet	1	of	1

TITLE	4/0 ga [103mm ²
PART #	45° 5/16 [M8]
PART #	5958EV