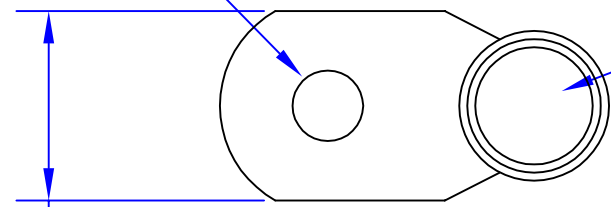
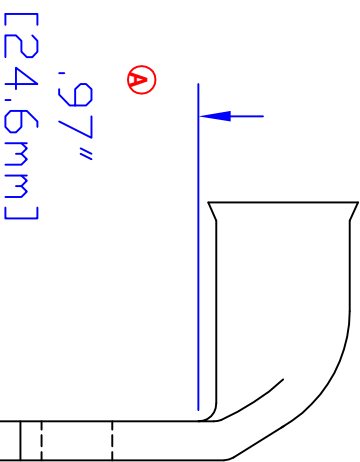


**ID sized for 4/0 ga
[103mm²] cable**

**Hole for
1/4 [M6] Stud**



**1.02
[25.9mm]**



**.97"
[24.6mm]**

**.10
[2.5mm]**

Rev	Date	ECN#	By	Description
B	8-17-09	1991	BS	Updated Dimensions
A	3-18-04	718	JMH	Change width and length dim.

Drawn By	Date	Checked By	Scale
Jim H	7-24-03	Paul	None
Tolerances, unless otherwise noted			
All dimensions are ref only			

Property of	TITLE
QUICK CABLE	4/0 ga [103mm² 90° 1/4 [M6]
Material & Treatment	PART #
100% Copper Tin plated	5958DL
3700 Quick Dr. Franksville WI	Drawing #
	5958DL-INFO
	REV
	B

Sheet	1	of	1
-------	---	----	---