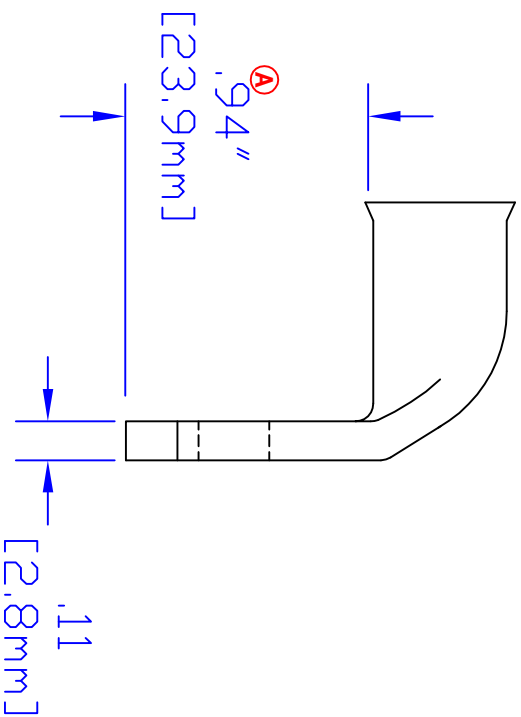
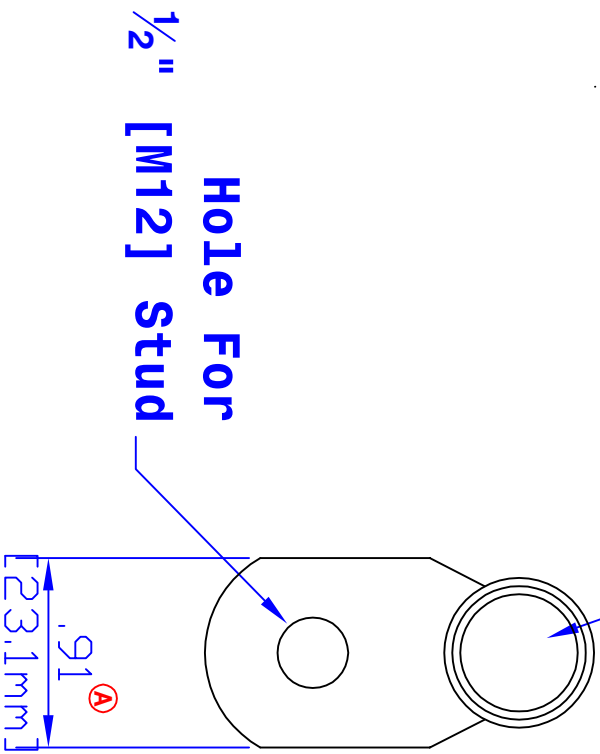


**ID Sized For 3/0 Ga  
[81mm<sup>2</sup>] Cable**



Rev	Date	ECN#	By	Description
<b>A</b>	3-18-04	718	JMH	Change width and length dim.

Drawn By	Date	Checked By	Scale
<b>Jim H</b>	<b>7-24-03</b>	<b>Paul</b>	<b>None</b>

Tolerances, unless otherwise noted  
All dimensions are ref only

Property of		TITLE
<b>QUICK CABLE</b>		3/0 Ga [81mm <sup>2</sup> ]
Material & Treatment		90° 1/2" [M12]
100% Copper		PART #
Tin Plated		<b>5957HL</b>
Drawing #	Sheet	REV
<b>5957HL-INFO</b>	<b>1</b> of <b>1</b>	<b>B</b>

3700 Quick Dr., Franksville WI