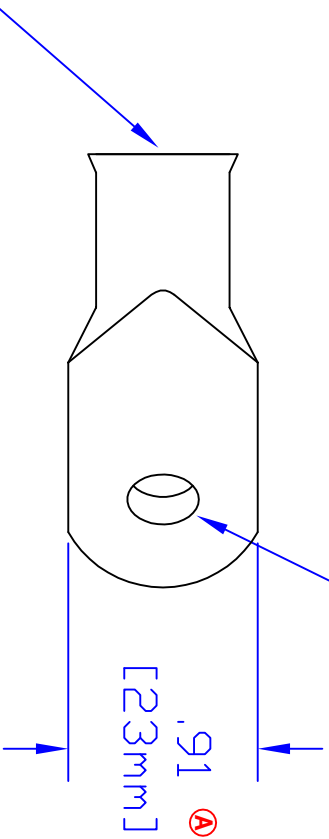
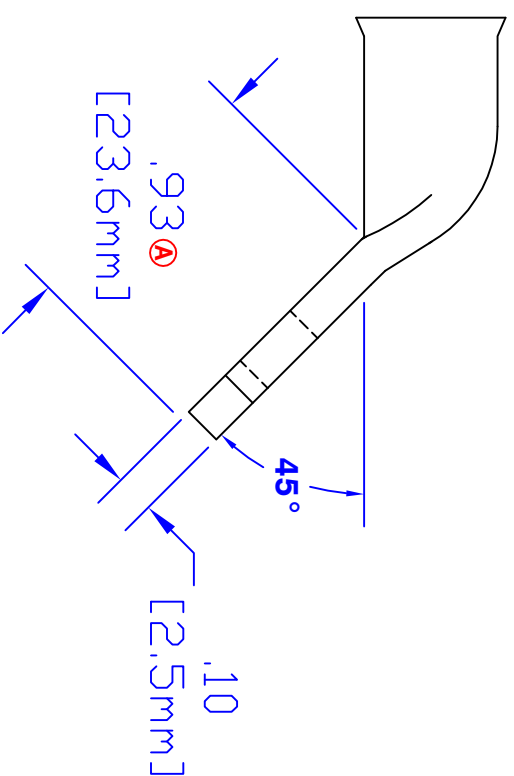


**Hole for 3/8" [M10] Stud**



**ID Sized For  
3/0 Ga [81mm<sup>2</sup>] Cable**



Rev	Date	ECN#	By	Description
<b>A</b>	3-18-04	718	JMH	Change width and length dim.

Drawn By	Date	Checked By	Scale
<b>Jim H</b>	7-24-03	<b>Paul</b>	None

Tolerances, unless otherwise noted  
All dimensions are ref only

Property of	Material & Treatment
<b>QUICK CABLE</b>	100% Copper Tin plated

TITLE	3/0 Ga [81mm <sup>2</sup> ] 45° 3/8" [M10]
PART #	5957FV
Drawing #	5957FV-INFO
REV	<b>B</b>
Sheet	1 of 1

3700 Quick Dr., Franksville WI