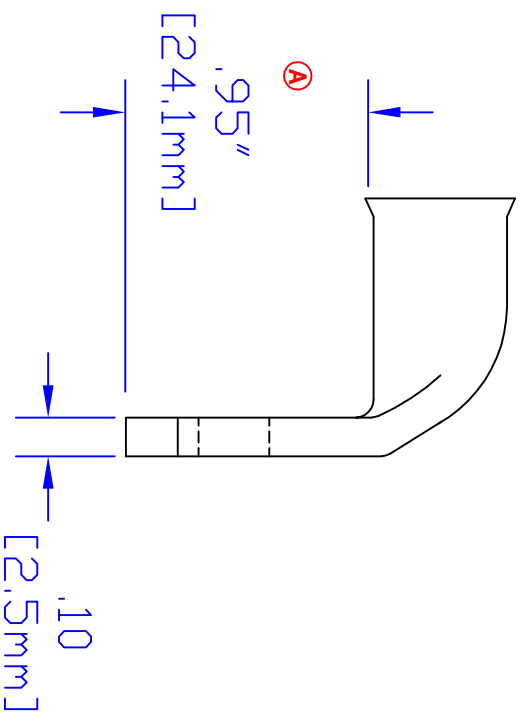
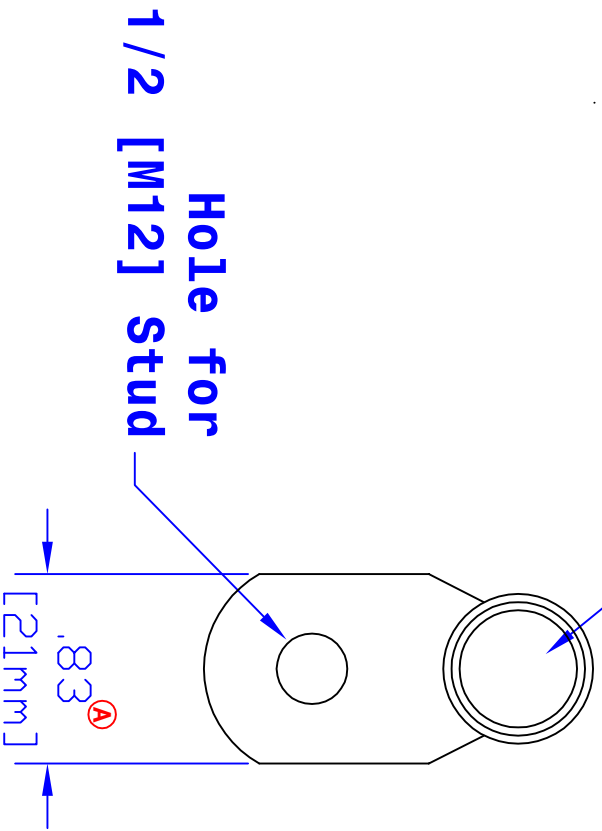


**ID sized for 2/0 ga
[62mm²] cable**



Rev	Date	ECN#	By	Description
B	8-17-09	1995	BS	Updated Dimensions.
A	3-18-04	718	JMH	Change width and length dim.

Drawn By	Date	Checked By	Scale
Jim H 7-24-03		Paul	None
Tolerances, unless otherwise noted All dimensions are ref only			

Property of	TITLE
QUICK CABLE	2/0 ga [62mm ² 90° 1/2 [M12]
Material & Treatment	PART #
100% Copper Tin plated	5956HL
3700 Quick Dr. Franksville WI	Drawing #
	5956HL-INFO
	REV
	B

Sheet	1	of	1
-------	---	----	---