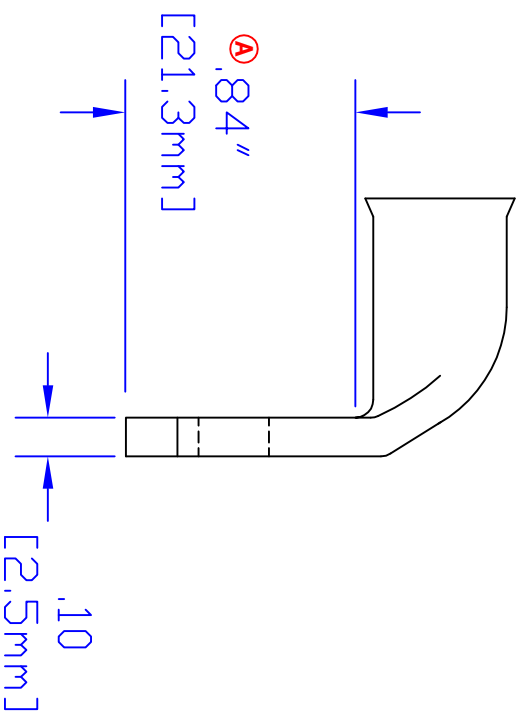
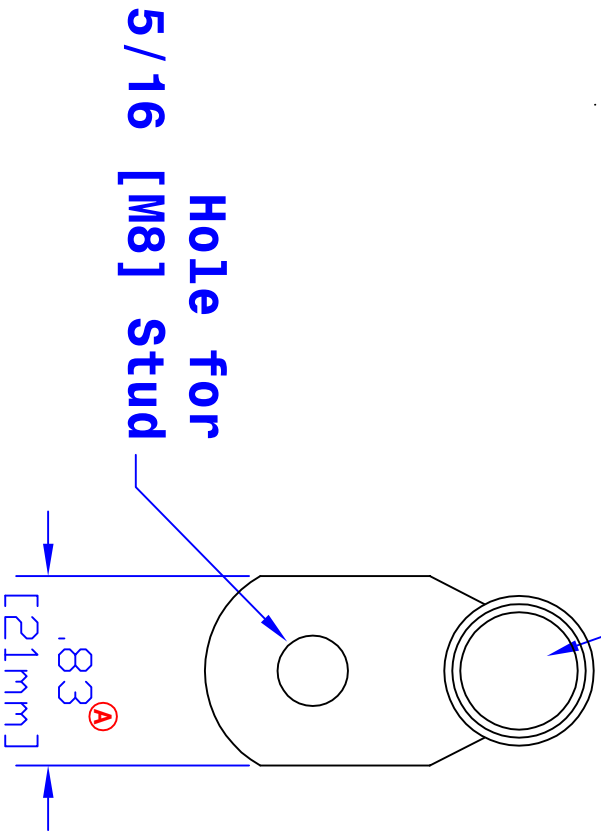


**ID sized for 2/0 ga  
[62mm<sup>2</sup>] cable**



Rev	Date	ECN#	By	Description
<b>B</b>	8-17-09	1991	BS	Updated Dimensions.
<b>A</b>	3-18-04	718	JMH	Change width and length dim.

Drawn By	Date	Checked By	Scale
<b>Jim H 7-24-03</b>		<b>Paul</b>	<b>None</b>
Tolerances, unless otherwise noted <b>All dimensions are ref only</b>			

Property of <b>QUICK CABLE</b> 3700 Quick Dr., Franksville WI		TITLE 2/0 ga [62mm <sup>2</sup> 90° 5/16 [M8]
Material & Treatment <b>100% Copper Tin plated</b>	PART # <b>5956EL</b>	Drawing # <b>5956EL-INFO</b>
		REV <b>B</b>
Sheet <b>1</b>	of <b>1</b>	