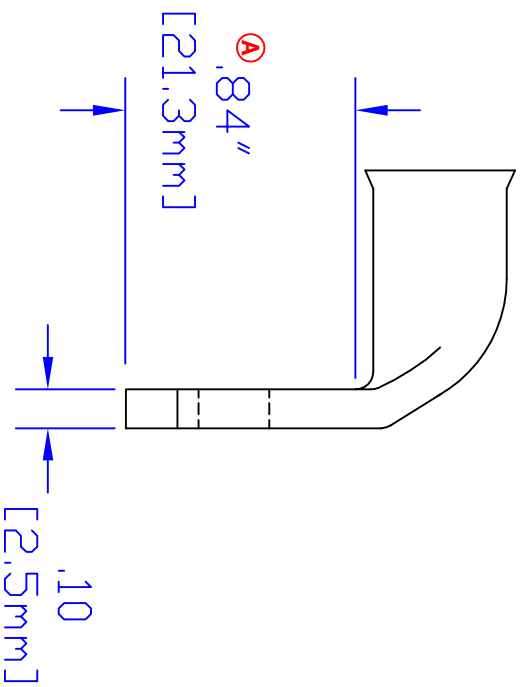
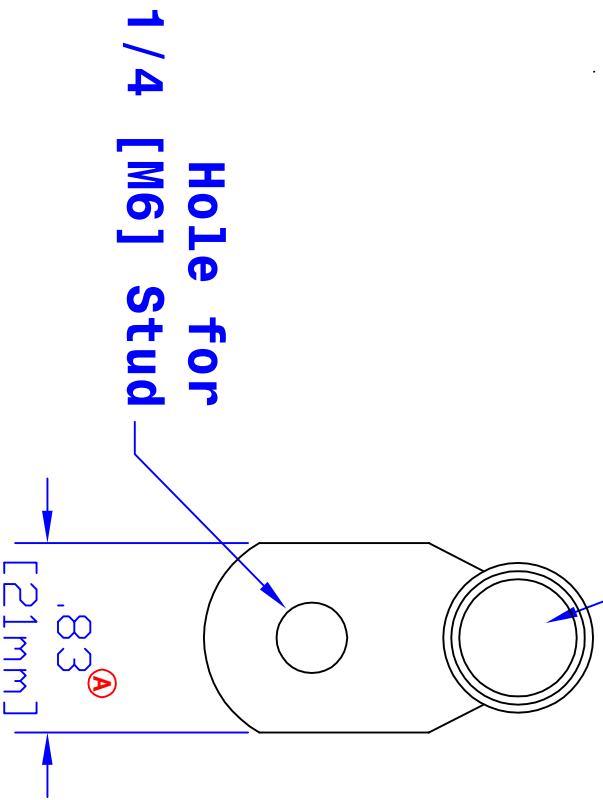


**ID sized for 2/0 ga
[62mm²] cable**



Rev	Date	ECN#	By	Description
B	8-17-09	1991	JMH	Updated Dimensions.
A	3-18-04	718	JMH	Change width and length dim.

Drawn By	Date	Checked By	Scale
Jim H	7-24-03	Paul	None
Tolerances, unless otherwise noted All dimensions are ref only			

Property of	TITLE
QUICK CABLE	2/0 ga [62mm ² 90° 1/4 [M6]
Material & Treatment	PART #
100% Copper	5956DL
Tin plated	Drawing #
	5956DL-INFO
	REV
	B

3700 Quick Dr. Franksville WI	Sheet	1	of	1
-------------------------------	-------	---	----	---