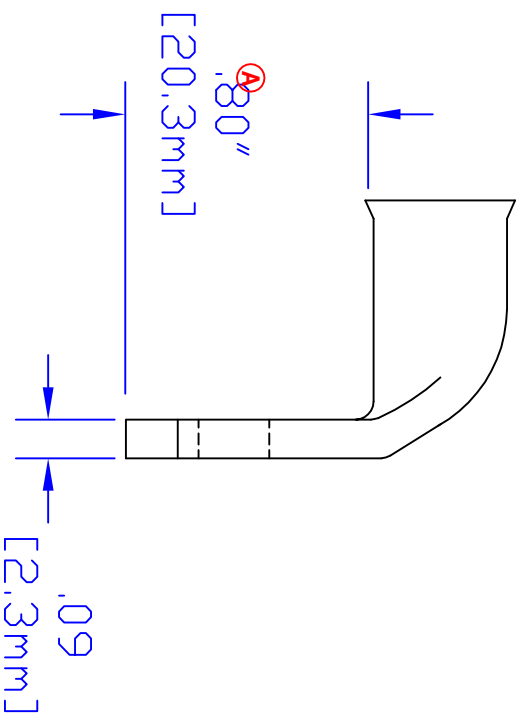
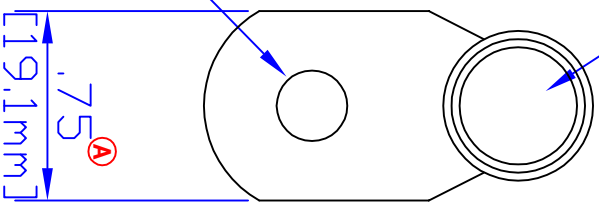


**ID sized for
1 ga [40mm²] cable**

**Hole for
1/2 [M12] Stud**



Rev	Date	ECN#	By	Description
A	3-18-04	718	JMH	Change width and length dim.

Drawn By	Date	Checked By	Scale
Jim H	7-24-03	Paul	None
Tolerances, unless otherwise noted All dimensions are ref only			

Property of	3700 Quick Dr., Franksville WI
QUICK CABLE	
Material & Treatment	100% Copper Tin plated

TITLE	1 ga [40mm ²]
PART #	90° 1/2 [M12]
Drawing #	5954HL-INFO
Sheet	1 of 1
REV	B