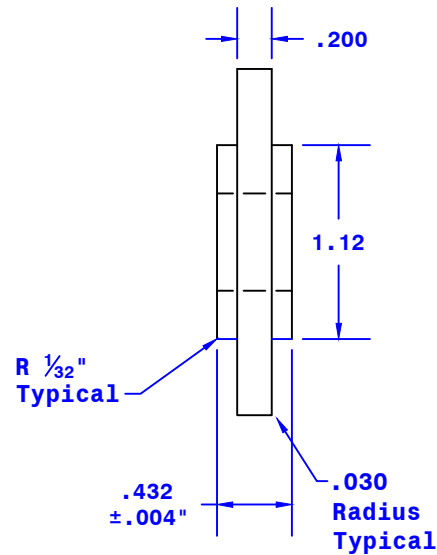
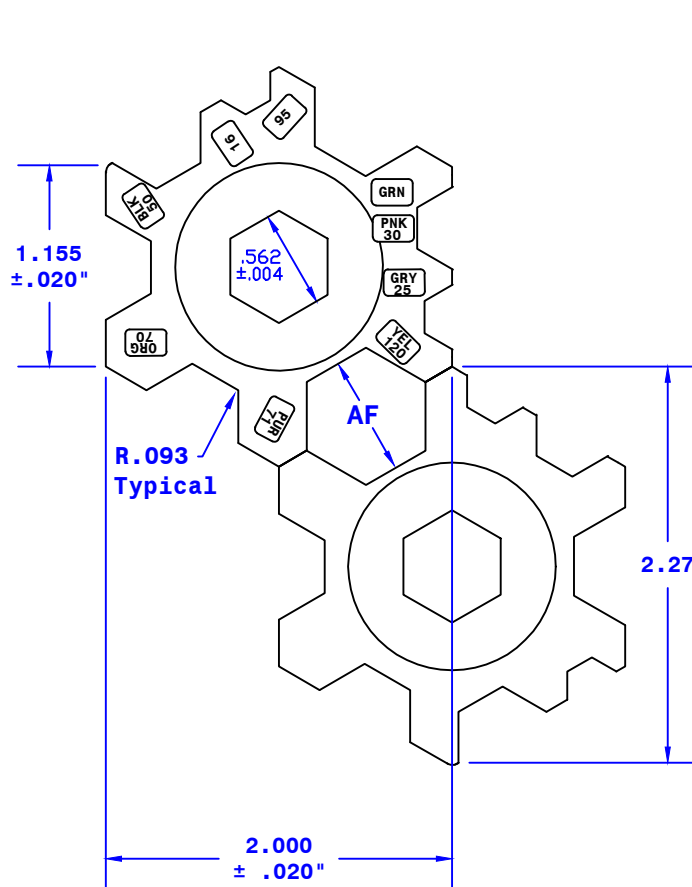
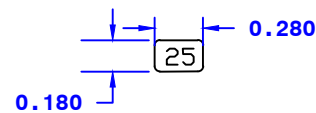


Hex Hole To Be
Broached To .564
Finish Size At QC



Number Pocket detail



Box and Numbers
Raised .015"

Crimping Die Dimensions

DIE NUMBER	COLOR	AF
16	-	.285
25	GREY	.325
30	PINK	.415
50	BLACK	.510
70	ORANGE	.525
71	PURPLE	.530
95	-	.590
120	YELLOW	.685

Property of QUICKCABLE® 3700 Quick Drive Franksville, WI 53126 U.S.A. www.quickcable.com	TITLE	Hex Crimp Die
	PART #	1104
Confidential and Proprietary Information		
Material & Treatment 4140 Steel RC-42-46 Nickel Plate Finish	Drawing #	1104-Info
	Sheet 1 Of 1	REV B

Rev	Date	ECN#	By	Description	Drawn By	Date	Checked By	Scale
B	10-06-11	2400	JMH	Nickel plate was black oxide; removed painting	TC	6-25-96	Mike E	None
A	12-09-09	1977	JMH	Redrawn in CAD; replaces 4255-RI pdf. & 10392 pdf	Tolerances, unless otherwise noted			
					2 Place Dec. ± .010"			
					3 Place Dec. ± .005"			