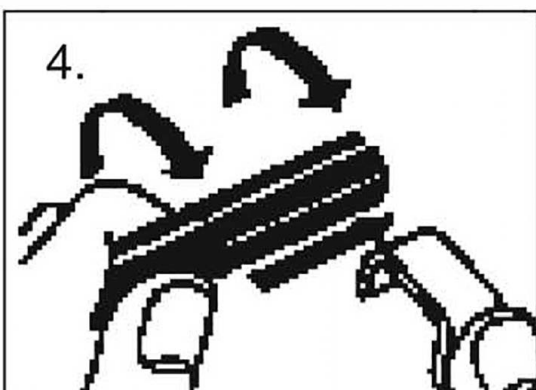
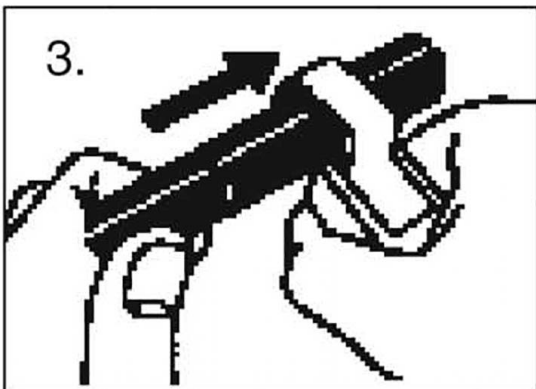
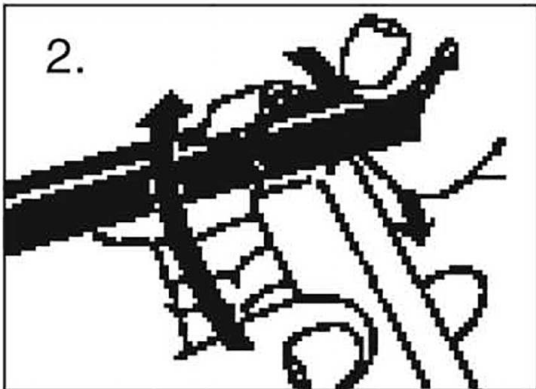
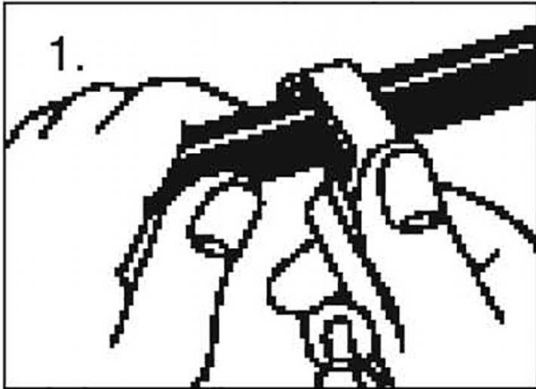


No. 4215-001

# Quick Strip Cable Stripper



1. Push the cable guide up with your thumb. Insert the cable under the guide. Release the guide, so it retracts, holding the cable in place. *See Figure 1*
2. Rotate the stripper, as shown in Figure 2.
3. Do not release pressure from the cable guide. Pull the tool to the end of the cable. *See Figure 3.* The blade which made a circular cut will automatically rotate for a longitudinal cut.
4. Peel the insulation from the cable. *See Figure 4.*

Please Note: The blade can be adjusted up and down by rotating the plastic screw in the bottom of the tool.

A spare blade (Item #4216 - sold separately) can be stored inside of the handle. To open the handle, remove the two metal screws. As long as the cable guide is in a relaxed position, the tool is not spring loaded, but in any case use care. Always wear safety glasses when working with tools or around batteries.

If you have questions about the use, maintenance or safety of this tool, please contact Quick Cable Customer Service at 800-558-8667 or [sales@quickcable.com](mailto:sales@quickcable.com)

**QUICKCABLE**  
Your Best Connection

3700 Quick Drive • Franksville WI 53126-0509